



AGM & Conference

May 15th & 16th, 2024
Delta Fredericton



The New Brunswick
Association of
**NURSING
HOMES**

L'Association des
**FOYERS
DE SOINS**
du Nouveau-Brunswick

AGM 2024



PRESIDENT AND CEO MESSAGE



We are so excited to be hosting the 2024 NBANH Annual General Meeting. This year we are anticipating another encouraging, educational, and reinvigorating 2-day event. Our event theme “*This is Long Term Care in NB*” sets the stage for the discussions that will follow our fantastic lineup of speakers. It hardly seems sufficient to say that there have been significant changes over the past year, given the experience of the previous few years, however, we all know that getting back to our normal business has presented some unique challenges. Meeting staffing levels has been a struggle in most areas of our province as has been the case in most areas of the world and especially in healthcare. In response to this challenge, homes have stepped up and sometimes even out of their comfort zone. There has been considerable effort put into international recruitment over the past year with the support of our stakeholders at the Departments of Social Development and Health. These efforts have led to positive results for many homes.



We congratulate the planning committee for once again organizing an exciting in-person event. Please join us in thanking Mélanie Eva for her wonderful leadership given to the AGM planning committee and NBANH staff in organizing this event. Without Mélanie, this event would not be possible. Thank you for your dedication and commitment, Mélanie.

Once again, we are pleased to welcome all vendors to the tradeshow and encourage all delegates to visit each booth. We thank vendors for their efforts to attend and to make their booths engaging, relevant, informative, and of course fun.... fun is very important.

Sincerely,

Harry Eagles
President, NBANH

Julie Weir
Chief Executive Officer, NBANH

PLATINUM SPONSORS





AGM PLANNING COMMITTEE MESSAGE



The AGM Planning Committee and I are thrilled to be able to organize an educational and fun event for the Nursing Home sector of NB. This conference includes a fantastic speaker line-up with a variety of topics that touch on the daily work of the leaders in LTC, as well as a social environment to encourage networking. The event sponsors and vendors are eager to share their innovative products or services so that at the end of the day, we all work towards improving the quality of life of our residents. And of course, a chance to win fantastic prizes with the Event Passport!

The AGM and Conference logo and theme *This is Long Term Care in NB (LTC-NB)* remains the same as it represents various senior services coming together to form a unified approach to quality of care for seniors, with nursing homes taking the lead. Though our sector evolves year after year, we continue to honour the residents as we continue to work together with partners and stakeholders to provide quality of care for the seniors in NB.

I want to give a special shout-out to the AGM Planning Committee members; Amélie Deschênes (Administrator at Les Résidences Jodin) and Julie Jollimore (Director of Care at Kenneth E. Spencer Memorial Home Inc.) for their dedication and assistance in organizing a successful event.

Enjoy the conference!

Mélanie Eva

AGM Planning Committee Chair
Administrative Coordinator, NBANH

NBANH STAFF

Julie Weir

CEO

René Doucette

COO

Jennifer Boyd

Labour Relations & HR Officer

Emma Bradford

Recruitment & Retention Coordinator

Samantha Hachey

Wellness Coordinator

Mélanie Eva

Administrative Coordinator

Nicole Delamere

Executive Assistant



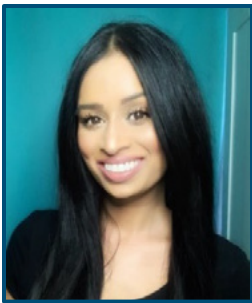
DR. AMIT ARYA, MD, CCFP (PC), FCFP

Medical Director, Specialist Palliative Care in Long-Term Care Outreach Program, Kensington Health

Lecturer, Division of Palliative Care, Department of Family & Community Medicine, University of Toronto

Assistant Clinical Professor, Division of Palliative Care, Faculty of Health Sciences, McMaster University

Dr. Amit Arya is a Palliative Care Physician who works in hospitals, home care, and long-term care facilities. He currently serves as the Medical Director of the Specialist Palliative Care in Long-Term Care Outreach Team, providing specialized palliative care services at Kensington Gardens in Toronto and other long-term care homes. Additionally, he holds the position of Medical Lead at NY CAST (North York Congregate Access and Support Team), where he leads a new program providing additional support, including specialist palliative care, to long-term care homes in the area. [Click here to continue reading Dr. Amit Arya's biography.](#)



DR. NADINE PERSAUD, PHD, MSW, BSW, RSW

Executive Director, Kensington Hospice

Senior Director, Client Services, Kensington Health

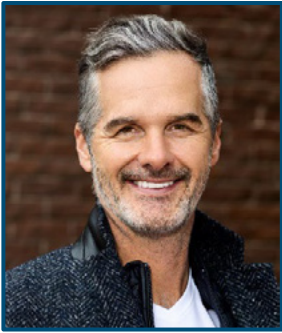
Dr. Nadine Persaud is currently the Executive Director of the Kensington Hospice and the Senior Director of Client Services at Kensington Health. Dr. Persaud has been working in the hospice palliative care field for the past 16 years. She sits on the Accreditation review panel for Hospice Palliative Care Ontario and previously sat on the Board of Directors for the Hazel Burns Hospice. Dr. Persaud sits on the Operations Committee of GIPPEC (Global Institute of Psychosocial Palliative and End-of-Life Care) and is also the Co-chair of the sociodemographic data collection learning collaborative through Hospice Palliative Care Ontario. [Click here to continue reading Dr. Nadine Persaud's biography.](#)



DR SUZANNE DUPUIS-BLANCHARD, RN, PH.D., FRSC, FCAN

Université de Moncton

Dr. Suzanne Dupuis-Blanchard is full professor at the School of Nursing, as well as Research Chair in Population Aging and Director of the Center on Aging at the Université de Moncton. A registered nurse for 33 years, her program of research focuses on the multiple dimensions of aging in place, including aging in the context of official linguistic minority communities. She is a Fellow of the Royal Society of Canada, a Fellow of the Canadian Academy of Nursing as well as a member of local, provincial, and national committees related to aging, including the Institute of Aging Advisory Board of the Canadian Institutes of Health Research (CIHR). She is the immediate past chair the National Seniors Council at the federal government (2017-2022) and the past president of the Canadian Association on Gerontology (2014-2018). [Click here to continue reading Dr. Suzanne Dupuis-Blanchard's biography.](#)



MARTIN LATULIPPE
Entrepreneur, Author and Mentor

Martin has accompanied tens of thousands of individuals and hundreds of world-class organizations to maximize their potential and their business development. Drawing on his experience of collaborating with the best organizations in the world, Martin has since 2011 begun to offer his expertise in the world of Web entrepreneurship and trained several of the new Web leaders who have experienced spectacular rises in terms of turnover, audience and impact in fields as varied as health, mindfulness, meditation, fitness, yoga, business development, coaching, weight loss, financial management, sales physical products, and dozens of other topics. [Click here to continue reading Martin Latulippe’s biography.](#)



ERIN ARSENAULT, BSC, M.A., LL.B.
Resonance Inc.

Erin Arsenault, BSc, M.A., LL.B., is a proactive and results-driven Human Resources professional with over 15 years’ progressive management and leadership experience. She has a degree in law, a master’s in psychology, and is gearing up to earn her PhD in organizational psychology. Erin received foundation of governance training from Governance Professionals of Canada and is currently completing her GPC.D designation. Prior to joining Resonance, Erin worked for a local health authority. She brings a wealth of HR knowledge and experience to the Resonance team. [Click here to continue reading Erin Arsenault’s biography.](#)



SARAH WISEMAN
Canada Director, The Shapiro Foundation

Sarah joined The Shapiro Foundation as their Canadian Director in 2021, having worked in partnership with them since 2018 on a variety of refugee-focused humanitarian and economic programs. In her previous career, Sarah was a Partner in a regional Nova Scotian law firm, where she practiced management-sided Labour & Employment law for fifteen years. In 2015, at the height of Canada’s Syrian refugee resettlement effort, she co-founded and Chaired a local community refugee sponsorship group, Pictou County Safe Harbour. [Click here to continue reading Sarah Wiseman’s biography.](#)

GOLD SPONSORS



PANEL DISCUSSION: MODERATOR



JODI HALL

CEO, Canadian Association for Long Term Care (CALTC)

Jodi Hall joined the Canadian Association of Long Term Care as the inaugural CEO in 2021. Jodi previously served as the Executive Director of the New Brunswick Association of Nursing Homes from 2017-2021, where she led the Association through the provincial implementation of the InterRAI LTCF in all long-term care homes in the province and the development of a provincial Recruitment and Retention Strategy. During this time, she also served on the CALTC Board, including as Chair of the Board of Directors from 2019 to 2021.

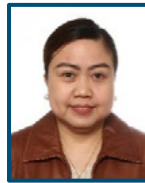
[Click here to continue reading Jodi Hall's biography.](#)

PANEL DISCUSSION: MEMBERS



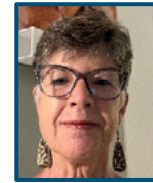
Ernestine Bahati, RN, is a former Refugee from Kenya working in the Healthcare sector in Nova

Scotia and a Labour Mobility consultant with RefugePoint.



Astinn Ungria is currently working as a Resident Assistant at the Drew Nursing Home in Sackville. Astinn was an RN and

a registered pharmacist in the Philippines.



Barb Corey is a retired Sales and Marketing professional. Barb and her ThriveNB Team work to

welcome and settle newcomers in their new life in NB

SILVER SPONSORS

JARISLOWSKY FRASER LIMITED
INVESTMENT COUNSEL

belairdirect.

EVENT PASSPORT

You will find the Event Passport in your registration bag. The more you network with our event Sponsors and Exhibitors, the more you increase your chance to win an Ipad or regional prizes! Each winner of a regional prize will receive a gift bag of local wellness products. The winners will be drawn during the banquet.

A big shout out to the In Kind Sponsors for the Regional Prizes!


- Kings Landing
- Delta Fredericton
- Magic Mountain
- Museum Resurgo Place
- CasinoNB
- Village historique acadien
- Pays de la Sagouine
- Huntsman Aquarium
- Kingsbrae Botanical Garden

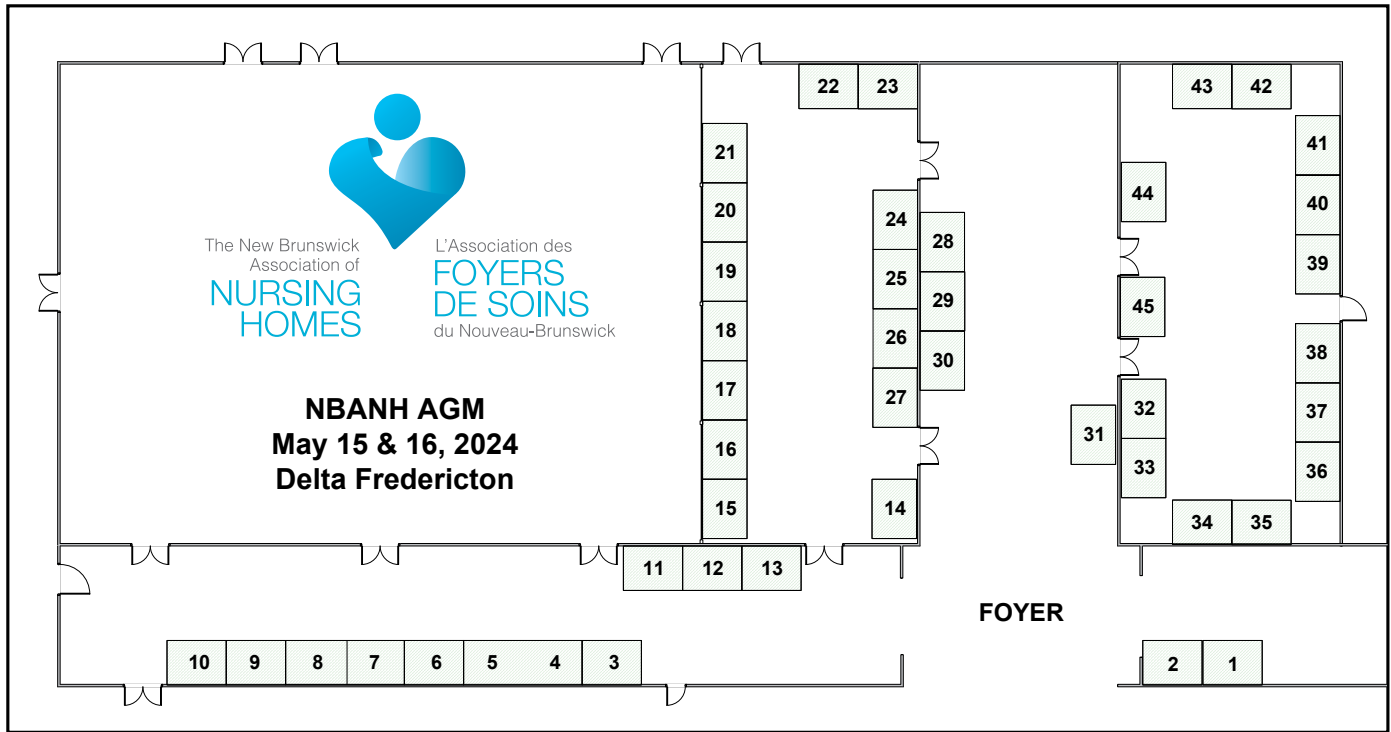
WEDNESDAY, MAY 15TH, 2024

TIME ROOM	ACTIVITY
8:00 am – 4:00 pm Foyer	Registration
9:30 am – 10:00 am Ballroom ABC	Media Training 101 Erin Arsenault <i>English presentation. Simultaneous translation available.</i>
10:00 am – 1:00 pm Ballroom ABC	Governance Session & President’s Luncheon Part 2: Good Governance by Erin Arsenault, Resonance Inc. President’s Luncheon with Harry Eagles, NBANH President <i>Board members and Administrators Only. Registration required as lunch will be provided. Simultaneous translation available.</i>
10:15 am – 1:00pm Victoria Room	DON DOC Education Session iTacit & ThriveNB <i>Registration required as lunch will be provided.</i>
1:30pm – 3:00 pm Ballroom ABC	AGM Business Meeting <i>Simultaneous translation available.</i>
3:00 pm- 3:45 pm Ballroom ABC	AGM Business Meeting New Brunswick Continuing Care Safety Association <i>Simultaneous translation available.</i>
3:00 pm-4:30 pm Tradeshow Space	Tradeshow 45 + Exhibitors <i>Don’t forget to bring your Event Passport along!</i>
3:30 pm – 4:00 pm Victoria Room	Information Session CARF CANADA Accreditation Matter – The Value of CARF Accreditation
6:00 pm- 6:30 pm Victoria Room	Information Session Accreditation Canada Are you ready to take the next step in your quality improvement journey?
6:30 pm – 8:00 pm Ballroom ABC	Opening Ceremonies Please join us to celebrate the opening of our Annual General Meeting. We will be joined by Hon. Brenda Murphy, Lieutenant Governor of New Brunswick, as well as other dignitaries. We have the honour to present the sector awards followed by a Keynote address by Dr. Amit Arya and Dr. Nadine Persaud titled <i>Pioneering Change by Breaking Barriers: Using Specialist Palliative Care to Achieve Excellence in Long-Term Care.</i> <i>Simultaneous translation available.</i>
8:00 pm – 10:00 pm Tradeshow Space	Exhibitor’s Reception Please join us for a reception among our exhibitors. You will have the opportunity to check the many valuable services and products available, as well as network with your colleagues from around the province. <i>Enjoy local jazz music performed by Garry Hansen, Jorian Hapeman, and Jason Flores. Wine and Hors d’oeuvres will be served. Cash bar available.</i>

*Green cells are for New Brunswick Association of Nursing Home members only.

THURSDAY, MAY 16TH, 2024

TIME ROOM	ACTIVITY
7:30 am – 9:00 am Tradeshow Space	Breakfast Buffet
7:45 am – 8:15 am	Wellness Activity Walking the Fredericton Green Meet us in the lobby of the Delta!
7:30 am – 1:15 pm Tradeshow Space	Tradeshow 45 + Exhibitors <i>Don't forget to bring your Event Passport along!</i>
9:00 am – 10:15 am Ballroom ABC	Together, let's explore! Dr Suzanne Dupuis-Blanchard <i>French presentation. Simultaneous translation available.</i>
10:15 am – 10:45 am Tradeshow Area	Coffee Break
10:45 am – 12:00 pm Ballroom ABC	The EMPP Opportunity: A Multi-Partnered Approach to Addressing Labour Shortages in Long Term Care Sarah Wiseman <i>English presentation. Simultaneous translation available.</i>
12:00 pm – 1:15 pm Tradeshow Space	Lunch Buffet
12:45 pm – 1:15 pm Victoria Room	Education Session Complete Purchasing Services Inc. Understanding Inflation & Global Supply Chain Drivers
1:15 pm – 2:30 pm Ballroom ABC	Welcoming IENs to the Workforce Panel Discussion lead by Jodi Hall <i>English presentation. Simultaneous translation available.</i>
2:45 pm – 4:00 pm Ballroom ABC	Put Your Heart into It! Martin LaTulippe <i>French presentation. Simultaneous translation available.</i>
4:00 pm – 4:30 pm Victoria Room	Information Session TELUS Health End-to-end expert retirement and pension plan services and support
4:30 pm – 6:00 pm	Free Time
6:00 pm – 6:30 pm Foyer	Cocktail Reception <i>Cash Bar.</i>
6:30 pm – 11:00 pm Ballroom ABC	<p>Banquet and Dance</p> <p>We are going to finish this conference with a BANG! We will party to music performed by Big Bad Party Band! During the meal, we will enjoy an acoustic solo by the lead singer and guitarist, Phil Athanase. Bring your dancing shoes!</p> 



Booth	Company	Booth	Company
1	Girardin Blue Bird	24	Abatement Technologies
2	DLCANA Inc.	25	Agendrix
3	Panasonic Canada Inc.	26	Accreditation Agrément Canada
4	Marsh Canada Limited	27	Harding Medical
5	Gordon Food Services	28	Handicare
6	StaffScheduleCare	29	MPT-INTL
7	CARF Canada	30	Lawtons Home HealthCare Equipment Division
8	Advanced Care Group of Companies	31	Lawtons Drugs
9	TELUS Health Santé	32	First Aid Medic
10	Forbo Flooring Systems	33	Homewood Health Santé
11	Assumption Vie Assumption Life	34	Crestline Coach Ltd
12	Hub International	35	GoEasyCare
13	Complete Purchasing Services Inc.	36	Associated Health Systems Inc. (AHS)
14	Chandler Sales	37	Quality Sound Alarm (QSA)
15	Plan A	38	Cornerstone Medical
16	Essity	39	Mölnlycke
17	Surge Learning Inc.	40	ThriveNB
18	Medline Canada, Corporation	41	iTacit
19	Silver Group Purchasing Partner Network (SGP)	42	Convergint Technologies Ltd.
20	Dallas Mercer Consulting (DMC)	43	Cardinal Health Canada
21	Alloray	44	Staples Professional Professionnel
22	Joerns Healthcare Canada	45	Baxter Canada
23	Canada MedCart		

EXHIBIT HOURS

Wednesday, May 15th, 2024

3 pm - 4:30 pm Exhibits are Open!
8 pm – 10 pm Exhibitor's Reception

Thursday, May 16th, 2024

7:30 am – 1:30 pm Exhibits are open!
The food will be served in the tradeshow space.

Meet our Sponsors and Exhibitors! Make sure you make your way around the tradeshow. The more you network, the more you have a chance of winning a prize.

COMPLETE PURCHASING SERVICES INC.

Platinum Sponsor



As a Complete Purchasing Services member, you'll experience benefits that extend beyond products & services – you have a partner who cares about the people you work with and serve. We enable our members to save time and money by providing them with the right products & services at the right price, including tools and resources that streamline the workflow for their operations. To learn more about the benefits of the COMPLETE program, please visit www.eCPS.ca > Success Stories.

CONNOR, CLARK & LUNN INVESTMENT MANAGEMENT LTD.

Platinum Sponsor



Founded in 1982, Connor, Clark & Lunn Investment Management Ltd. (CC&L) is one of the largest independently owned investment management firms in Canada. We offer a diverse array of investment services including equity, fixed income, balanced and alternative solutions including portable alpha, market neutral and absolute return strategies.

Looking for Balance?

Get **COMPLETE** Cost and Time Savings for Your Operation!

A la recherche d'un équilibre ?
Obtenez des économies de temps et d'argent **COMPLÈTES** pour vos opérations!



To Learn More / Pour plus d'informations :

Contact / Contacter: Sophie Arseneau
506.961.2679 or arseneau-sophie@avendra.com

Visit / Visiter: eCPS.ca



CONNOR, CLARK & LUNN

INVESTMENT MANAGEMENT

We are proud to support NBANH

Nous sommes fiers de supporter l'AFSNB

CONNOR, CLARK & LUNN

GESTION DE PLACEMENTS

ITACIT

Platinum Sponsor



iTacit is the leading frontline digital workplace and training solution helping New Brunswick nursing homes to improve workforce management and patient care. We equip HR leaders, nurse managers, directors, and their teams with tools to streamline operations, enhance communication, and maintain compliance with ease.

With iTacit, you can:

- Automate critical healthcare processes and enhance team coordination.
- Provide targeted training and automate learning paths with our healthcare LMS.
- Improve onboarding for nursing and care staff to quickly adapt to their roles.
- Utilize a dedicated career center for smarter recruiting and staff retention.

Ask about our new training courses - coming soon for New Brunswick long term care homes!

LAWTONS DRUGS

Platinum Sponsor



For over 40 years, Lawtons Drugs has proudly provided pharmacy services to facility partners including: long term care, assisted living, retirement living, independent living, addiction centers, mental health facilities, and special care. Our long-standing relationships and invaluable experiences with our facility partners drive the evolution and innovation of our service offerings. With dedicated fulfilment centers throughout Atlantic Canada servicing our continuing care partners, we are able to offer customized solutions and specialized care focused on safety and resident health. Although we have the national strength, support and resources of our parent company Sobeys Inc., it is the local focus of our community pharmacy teams that we consider our greatest asset. We are proud to be a Corporate member of NBANH.

Ready for tomorrow.

Keep it moving with employee benefits from HUB.

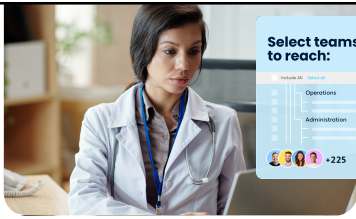
When you partner with us, you're at the center of a vast network of experts dedicated to helping you prepare for the unexpected.

We put you in control, with advice on how to confidently navigate change, and strategies tailored to support and engage your people.

hubemployeebenefits.ca



Risk & Insurance | Employee Benefits | Retirement & Private Wealth



Select teams to reach:
Operations
Administration
+225



New! Training Courses Coming in 2024!

Boost your staff's skills with our training and keep everyone connected effortlessly.

Ask about our new training courses for New Brunswick nursing home professionals.

See you at the show!
855 246 5196 | info@itacit.com



Proud to be Platinum Sponsor of the 2024 NB Association of Nursing Homes AGM

Fier d'être commanditaire platine de l'AGA 2024 de l'Association des foyers de soins du N.-B.

Your Partners in Continuing Care
Vos partenaires en soins continus



LAWTONS HOME HEALTHCARE EQUIPMENT DIVISION

Platinum Sponsor

Lawtons Home HealthCare Equipment Division offers a wide range of medical equipment, furnishings and technical service to hospitals, long term care and other medical facilities across Atlantic Canada. Our products include, patient handling, ceiling and floor lifts, bathing and hygiene solutions, beds and therapeutic surfaces, manual transfer aids and institutional furniture. For more information about any equipment or products you are looking for please contact our medical equipment specialist Victor Roy 506-377-5335 or via email: victor.roy@sobeys.com.

TELUS HEALTH

Platinum Sponsor



With more than 50 years of experience in helping improve the financial wellbeing of individuals and the organizational resilience of employers and fiduciaries, we are experts that build lasting relationships. Our integrated, multi-disciplinary and highly experienced team of actuaries, partners, and consultants help thousands of organizations with a multitude of financial wellbeing solutions, from administration and investment consulting to total rewards and compensation to develop dynamic strategies while helping to balance risk, cost and opportunity over time.

HUB INTERNATIONAL

Platinum Sponsor



Hub International is a leading full-service global insurance broker providing business insurance, employee benefits, personal insurance, and risk management services. When you partner with us, you're at the center of a vast network of experts dedicated to helping you prepare for the unexpected. We put you in control, with advice on how to confidently navigate change, and strategies tailored to support and engage your people. Learn more at hubemployeebenefits.ca.

ASSUMPTION LIFE

Gold Sponsor



Protect your employees and their loved ones from the unexpected. Assumption Life's Group Life Insurance products give you the flexibility to choose the best solution for your most important asset - your people. Through its team of highly qualified representative and prominent partners, Assumption Life offers a full range of products including group benefits, life insurance and wealth management. As a proud local partner, they are committed to provide the best possible service. Assumption Life has been a proud NBANH Corporate Member since 2013.

MARSH CANADA LIMITED

Gold Sponsor



Marsh is a global leader in insurance broking and risk management. In more than 130 countries, our experts in every facet of risk and across industries help clients to anticipate, quantify, and more fully understand the range of risks they face. In today's increasingly uncertain global business environment, Marsh helps clients to thrive and survive. We work with clients of all sizes to define, design, and deliver innovative solutions to better quantify and manage risk. To every client interaction, we bring an unmatched combination of deep intellectual capital, industry-specific expertise, global experience, and collaboration. We offer risk management, risk consulting, insurance broking, alternative risk financing, and insurance program management services to businesses, government entities, organizations, and individuals around the world. Marsh is a wholly owned subsidiary of Marsh & McLennan Companies (NYSE: MMC), the leading global professional services firm in the areas of risk, strategy and people.

SURGE LEARNING

Gold Sponsor



Surge Learning is a Canadian based software as a service company providing online solutions for healthcare organizations. Surge is currently the education solution for hundreds of organizations across Canada, offering a suite of products including Learning Management, Policy Management, Quality & Risk Management, and Leadership Development.

BELAIR DIRECT

Silver sponsor



Car insurance and home insurance with belairdirect. Get great deals on car and home insurance and a simplified online experience. Visit www.belairdirect.com to get a quote today!

JARISLOWSKY, FRASER LIMITED

Silver Sponsor

JARISLOWSKY FRASER

GLOBAL INVESTMENT MANAGEMENT

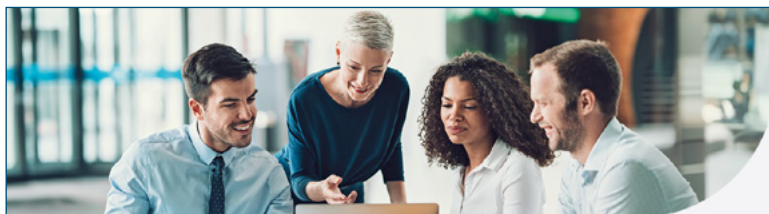
Jarislowsky, Fraser Limited is a registered portfolio management firm. Founded in 1955 as a research boutique, Jarislowsky Fraser today manages the portfolios of pension funds, foundations and endowments, corporations and individuals in Canada and internationally — representing more than CA\$62 billion in assets under management. Our mission is to grow our clients' capital in a lower risk manner. We achieve this by adding value through rigorous fundamental research, a disciplined investment process and integrating material environmental, social and governance factors into our investment decisions.

ABATEMENT TECHNOLOGIES

Corporate Member



Abatement Technologies is a leading manufacturer of HEPA-based air filtration and construction containment equipment for critical environments such as healthcare facilities and long-term care facilities. Abatement Technologies also manufactures rapid-deployment patient isolation equipment designed to convert standard patient rooms into isolation rooms for patients with airborne illnesses. Our flagship product, SHIELD WALL™ is a modular wall system designed to contain airborne contaminants while performing construction or renovation work. Our walls can be purchased for recurring projects or rented, delivered and installed by our rental partner, TWS Canada. New in 2024, we introduced ATL Filtration, which offers high-quality filtration products alongside personalised consultation, recommending the most suitable air filter solutions based on specific needs and requirements. Our experts understand the importance of clean air and are dedicated to providing the highest level of customer support in addition to our professional filter assessment and replacement services.



End-to-end expert retirement and pension plan services and support.

For over 50 years, our integrated, multi-disciplinary and highly experienced team of actuaries, partners, and consultants has helped thousands of organizations with a multitude of financial wellbeing solutions. From actuarial and investment consulting to administration and compensation strategies – we develop dynamic strategies that help you manage risk and costs to lead to a dignified retirement for your people.

www.telushealth.com

Proud sponsor of the 2024 AGM

Fière partenaire de l'AGA 2024

Proud to be one of Atlantic
Canada's Top Employers for 2024!

*Fier d'être l'un des meilleurs
employeurs au Canada
Atlantique en 2024!*

www.assomption.ca
www.assomption.ca



Assomption Vie
Assumption Life

ACCREDITATION CANADA

Associate Member

Accreditation Canada delivers a wide range of high-impact assessment programs for health and social service organizations, powered by HSO, and customized to local needs. Accreditation Canada works with more than 900 expert peer surveyors with extensive health care and social services experience and trained in Accreditation Canada's customized, continuous assessment program. For more than 60 years, Accreditation Canada has been working with health, social and community service organizations to advance quality and safety.



ADVANCED CARE GROUP OF COMPANIES

Corporate Member

We are a professional health care company that provides health care staffing services to long term care and acute care facilities across Canada.



AGENDRIX

Agendrix is an online workforce management for shift managers. 12 000+ SMBs use Agendrix to better manage employee schedules, track clock-in/clock-out hours, manage their HR and communicate with their team.



ALLORAY

Corporate Member

We are a national floorcovering company that provides commercial flooring products and solutions to the Long Term Care industry. Established in 1971, we have been working hand in hand with our customers for over 50 years.



Possibility happens here

Powering possibility for 150 years, Marsh is a proud sponsor of the New Brunswick Association of Nursing Homes.

marsh.ca

A business of Marsh McLennan

Copyright © 2021 Marsh Canada Limited. 661753371



STAFF TRAINING
QUALITY & RISK
POLICY MANAGEMENT
MADE EASY

Learn More

✉ sales@surgelearning.ca

☎ **1.844.843.4670 ext. 18**

🌐 www.surgelearning.ca

ASSOCIATED HEALTH SYSTEMS INC



For more than 25 years, Associated Health Systems has partnered with hundreds of healthcare facilities across Canada with our innovative fall management solutions helping to improve patient and resident care. Our fall reduction/injury prevention products represent our most advanced fall management solutions while allowing your facility to take its program to another level in terms of quality, safety and efficiency. It is also a way to support cost-saving goals—empowering you to reduce the incidence of falls and drive operational efficiencies through greater standardization across your organization. To create a safe and comfortable environment offering individuals with special needs and challenging conditions the autonomy to engage and satisfy their perceptual needs. Because it does not rely on verbal communication, Multi-Sensory therapy can reach those who would otherwise be almost impossible to connect with. Moreover, this client-centered philosophy can greatly improve the quality of life for people with disabilities and other limiting conditions.

BAXTER CANADA



Every day, millions of patients, caregivers and healthcare providers rely on Baxter's leading portfolio of diagnostic, critical care, kidney care, nutrition, hospital and surgical products used across patient homes, hospitals, physician offices and other sites of care. In Canada, we've been operating at the critical intersection where innovations that save and sustain lives meet the healthcare providers that make it happen for 85 years. With products, digital health solutions and therapies available in more than 100 countries, Baxter's employees worldwide are now building upon the company's rich heritage of medical breakthroughs to advance the next generation of transformative healthcare innovations. Baxter Canada and its over 1300 employees are located primarily in Ontario at the Head Office, CIVA Admixing and Technical Services Centres in Mississauga, and in Alliston – where Baxter operates Canada's only large-scale manufacturing plant producing life-sustaining intravenous and dialysis solutions. To learn more, visit www.baxter.ca and follow Baxter Canada on LinkedIn.

CANADA MEDCART

Corporate Member



Canada Medcart offers you the lightest, most ergonomic Long Term Care and Retirement Home medcarts available. Our medcarts are designed based upon the recommendations of a study of LTC medcarts. Canada Medcart carts include ergonomic features like aluminum construction which reduces the weight of our carts to reduce back strain from pushing a heavy cart and a lower, correct working surface height to reduce shoulder and back strain. Our Side by Side cart features a waist high narcotics drawer to reduce the strain of repeated bending to reach narcotics stored in a bottom drawer. Canada Medcart also offers a new Power Assist medcart to eliminate the effort to push a medcart! Canada Medcart is Canadian owned. Our medcarts are designed by Canadians for Canadian medication packaging. Canada Medcart is located in Toronto which means quicker delivery of carts and replacement parts than other companies without Canadian facilities to support Canadian business. Canada Medcart "makes an LTC nurses' life a little easier".

CARDINAL HEALTH

Empowering you to deliver care with confidence. As your essential partner, we help to simplify supply chain for a more sustainable and resilient Canadian healthcare, providing you trusted products, services and solutions. With us, you can deliver quality care to your patients and residents with peace of mind. Trusted products for your healthcare needs. We manufacture and distribute essential and differentiated products across the continuum of care. Solutions for long-term care start here. Delivering excellent resident care is your number one priority and it is ours too. As your trusted partner, we are committed to following through with products, clinical programs and insights that enhance resident safety and care. With our vast array of medical supplies, capital equipment and furniture, we have you covered. Our dedicated team is focused on building strong relationships rooted in ethics and exceptional customer care.



CARF CANADA
Associate Member



Founded in 1966, CARF’s mission is to promote the quality, value, and optimal outcomes of services through a consultative accreditation process and continuous improvement services that center on enhancing the lives of persons served. CARF’s person-centered approach to accreditation is an excellent choice for Aging Services providers including long-term care homes, supportive living, home and community services, independent senior living, personal supports services, case management, and adult day services. Organizations that have participated in a CARF accreditation survey demonstrate a higher degree of internal quality, greater involvement of persons served in their services, increased cohesion among staff members, and enhanced status of the accredited programs within the community.

CHANDLER
Corporate Member



At Chandler, we help Atlantic Canadian businesses grow. Our sales team is working every day to get you the products and services you need when you need them, and our selection is second-to-none. Most importantly your Chandler representative wants to be part of your team, helping you succeed every day. Whether you need office furniture, sanitation supplies, a full security system, safety equipment, or countless other business solutions, we’ve got them!



Meet your new insurance sweetheart.

Faites connaissance avec votre nouveau compagnon en assurance.

belairdirect.

Certain conditions, eligibility requirements, limitations and exclusions apply to all offers. Visit belairdirect.com for more details. Offers may change without notice. We offer car insurance and home insurance in Alberta, Ontario, Quebec, New Brunswick, Nova Scotia, Newfoundland and Labrador and Prince Edward Island and home insurance only in British Columbia. © 2023, Belair Insurance Company Inc. All rights reserved.
Certaines conditions, exigences d'admissibilité, restrictions et exclusions s'appliquent à toutes les offres. Visitez belairdirect.com pour plus de détails. Les offres peuvent être modifiées sans préavis. Nous offrons les assurances habitation et automobile en Alberta, en Ontario, au Québec, au Nouveau-Brunswick, en Nouvelle-Écosse, à Terre-Neuve-et-Labrador et à l'Île-du-Prince-Édouard, et l'assurance habitation seulement en Colombie-Britannique. © Compagnie d'assurance Belair inc. Tous droits réservés. 2023



Trusted for Quality Investing

Reconnue pour l'investissement de qualité

JARISLOWSKY FRASER
GLOBAL INVESTMENT MANAGEMENT
GESTION MONDIALE DE PLACEMENTS

CONVERGINT TECHNOLOGIES LTD.

Corporate Member



Convergent Technologies (formerly Dramis Communications Solutions Ltd. in Atlantic Canada) is a global Security and Communications integrator formed in 2001. In February of 2022, the former Dramis Communications Solutions was acquired by Convergent. In 2024 we continue to support our Health Care clients globally and specifically in Long Term Care facilities across Atlantic Canada. Continuing the service excellence of Dramis, we at Convergent strive “to be our customer’s best service provider”. Convergent has the trusted expertise to put the latest technology in place that offers reliable, secure operations. As a single source provider, Convergent integrates multiple communications tools and technologies resulting in immediate patient-to-staff communication, front-line mobility, and useful reporting tools, including call resolution times. Most importantly though, our systems offer a high quality of care contributing to resident satisfaction. We are a proud supporter and Corporate Member of the NB Association of Nursing Homes.

CORNERSTONE MEDICAL INC.

Corporate member



We specialize in distributing safe patient-handling equipment, dignified bathing, showering equipment, and Silentia Privacy Screens, the market leader of privacy and clear infection-control barriers. Contact us for more info or an on-site consultation.



New Brunswick Association of Nursing Homes 2024 AGM & Conference

Are you ready to take the next step in your quality improvement journey?

Join Accreditation Canada to learn more about our accreditation program and the new CAN/HSO 21001:2023 Long-Term Care Services standard, and our survey process.

WHEN? May 15, 2024 | 6:00 p.m. ET

Hosted by: Tina Bedard, Lead, Business Development and Education Services; and Jacqueline Hawboldt, Client Engagement Lead, Client Services

Guest speaker: Cindy Donovan, Surveyor, Accreditation Canada

**ACCREDITATION
AGRÉMENT
CANADA**

Connect With Us

<https://accreditation.ca/> | businessdevelopment@accreditation

Crestline is Canada's premier bus dealer. Since 1975, Crestline has been serving health care institutions with reliable and quality bus options for safe and comfortable transportation. With the broadest wheelchair-accessible bus product range and our unique background in ambulance manufacturing, we are an ideal partner for health care facilities. A NBANH Corporate Member since 2013.

Our specialists will help you find a bus matching your needs, advise you throughout your buying process and stand by your side to help you protect your investment. Learn more at www.crestlinebuses.com.



Founded in 2002, DMC fulfills the employer role in the management of claims for workers' compensation and sick leave across Canada. With offices in Nova Scotia, New Brunswick, and Newfoundland and Labrador, DMC ensures effective and proactive case management systems are in place to reduce claim durations so that workers are safely engaged in Stay at Work/Return to Work initiatives for the benefit of all stakeholders. Services include WCB claims and sick leave management, return-to-work planning, and support, liaising with WCB, insurance companies and healthcare providers, developing customized training, and appeals representation. In addition, DMC provides occupational health & safety training, industrial hygiene services, ergonomic assessments, and psychological/organizational health education services.

ACCREDITATION MATTERS

Choosing the right accreditation body is essential.

The Value of CARF Accreditation:

- Promotes person-centred planning, service delivery excellence, and achievement of positive outcomes.
- Business improvement through the ASPIRE to Excellence framework for implementing industry best practices.
- Field-driven, nonprescriptive standards and a consultative peer review process.

Questions? Contact Penny Gagnon at pgagnon@carf.org or call (888) 281-6531 ext. 2199



www.carf.org/Accreditation/Programs/Aging-Services



www.goeasycare.com

Healthcare Workforce Management Made Easy

HRIS Scheduling Time & Attendance Payroll

Helping build Community

sales@goeasycare.com

Saves you 90% of time spent filling shifts

We want to help you save time, do more with less and focus on what matters

Unique and intuitive design which is easy to use

DLCANA INC.

Corporate Member



DLCANA Inc is a distributor that provides mobility solutions In Canada from Physio Trace Canadian made patient slings & Etac a world-leading developer of ergonomic mobility aids for people at all stages of life – from small children to the elderly. DLCANA offers state-of-the-art products for numerous care situations, that aim to enhance activity regardless of physical circumstances. Our heart lies in the solutions that optimizes the quality of life for the individual, their family, and caregivers. The selection of premium products for patient handling, hygiene and fall prevention will always be a top priority. A NBANH Corporate Member since 2019.

ESSITY

Corporate Member



Essity (formerly SCA) is a leading global hygiene and health company. In North America, Essity develops and produces the leading global brands TENA, JOBST, Actimove and Leukomed. At TENA, we are committed to providing better continence care for all, and we understand that each situation and individual is unique. With 50 years of experience, we partner with you to tailor solutions that offer optimum fit and functionality, improving quality of care. We support you in delivering rewarding continence care that improves your residents' quality of life, and the efficiency of your Long-Term Care Home.

FIRST AID MEDIC

Corporate Member



First Aid Medic is a local New Brunswick grown small business. First Aid Medic offers first aid, CPR, BLS as well as advanced courses using the Heart and Stroke Foundation of Canada curriculum. Services are offered on site as required on your schedule. We also offer general health care consulting as well as other Worksafe required training. All our instructors are healthcare professional active in their respective fields. We pride ourselves in providing an open and inclusive environment for all. Our company also provides CSA Worksafe approved first aid kits. We offer services and training in both official languages.

FORBO FLOORING SYSTEMS

With over 150 years of experience, Forbo Flooring Systems is a trusted global supplier of high-quality floor coverings that include all-natural linoleum, highly durable textile options, cushioned luxury vinyl, slip-resistant alternatives, and entrance system products. Forbo is committed to environmentally responsible production, sustainable practices, and far-reaching customer service. Our portfolio of products combine design, function and durability, making it easy to choose perfect flooring solutions for your community. Whether you want the natural look of wood and stone, or if you want to create a modern, elegant atmosphere, Forbo Flooring Systems has a wide range of products to suit your needs.



FLOORING SYSTEMS

GIRARDIN BLUE BIRD

For nearly 65 years, Girardin Blue Bird is the official school bus distributor named by Blue Bird Corporation to serve the Quebec, the Ontario and the Maritime Provinces. The Girardin Blue Bird Company also distributes the MB Series minibuses built by Micro Bird Corporation. Today, Girardin Blue Bird holds a dominant position in the Quebec school bus market and an envious position in the commercial and specialized vehicle markets. With its annexed service department close to the state-of-the-art technology and its large franchisee parts warehouse, Girardin Blue Bird can guarantee a best and efficient after-sales service. More than 10,000 different part numbers are computerized, and the parcels can be delivered overnight everywhere in the province of Quebec.



GOEASycARE

GoEasyCare is Healthcare Workforce Management Made Easy. We offer a range of features to simplify and optimize your Scheduling, HR, and Payroll processes. Whether you have a single location or many and need enterprise-wide tools, GoEasyCare can provide you with what you need. From automated shift filling, intelligent scheduling and detailed time cards to Business Intelligence and AI we understand Healthcare Workforce Management. GoEasyCare modules such as HRIS, Onboarding, Scheduling, Time & Attendance and Payroll, all work seamlessly together to make managing your healthcare organization, Easy. GoEasyCare saves you time, reduces overtime, grievances, and improves staff engagement to help retain your staff. GoEasyCare - Easy - Complete - Exclusive to Healthcare.



GORDON FOOD SERVICES

Corporate Member

For more than 120 years, we've partnered with restaurants, big and small, as well as organizations like universities, healthcare facilities, hotels, stadiums and pretty much anywhere else that serves food! Every product, every delivery, and every decision we make is inspired by helping your business thrive. Have confidence in what you serve. From fresh produce and custom proteins to kitchen staples and supplies, our focus is on service, quality, price, and assortment. We guarantee the quality of everything our trucks deliver and will work with you to get the right products for your operation. We offer an array of tools and resources—from online ordering and recipe inspiration to a team of chefs, dietitians, and experts in your industry—meant to make running your operation easier. Which means you can spend less time managing your orders and get back to what's important to you.



 **Manulife** Investment Management

Local insight,
global reach,
one firm

- ✔ Diverse capabilities
- ✔ Strength and stability
- ✔ Service in stewardship



Scan the QR code
to learn more

© 2024 Manulife Investment Management. All rights reserved. Manulife, Manulife Investment Management, Stylized M Design, and Manulife Investment Management & Stylized M Design are trademarks of The Manufacturers Life Insurance Company and are used by it, and by its affiliates under license.



Proudly supporting the
New Brunswick Association
of Nursing Homes

MAWER

Be Boring. Make Money.™

Canada | U.S. | Singapore
+1 (800) 889-6248 mawer.com

HANDICARE

Handicare division of Salvaria is the leading provider of medical technology solutions specializing in the patient handling equipment with 300,000+ ceiling lift systems in North America, offering passive and active lifts, transfer aids, a wide range of slings and bathing hygiene products. Through the integration of Handicare, Span and Silvalea, we have captured a powerful platform that allows us at Lawtons Home HealthCare Equipment Division to provide a complete solution for your safe patient handling needs, resulting in improved positive outcomes for your facilities.

SAVARIA PATIENT CARE

Handicare / SPAN

JOERNS HEALTHCARE

Corporate Member

Joerns Healthcare is a leading manufacturer of electric adjustable beds, patient lifting devices, and therapeutic support surfaces. We simplify customer clinical operations by optimizing efficiencies, removing cost and standardizing care through evidence-based technology, therapies, and services.



HARDING MEDICAL

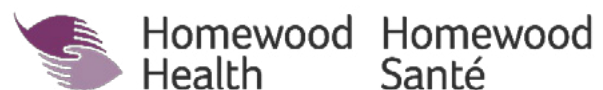
Corporate Member

Harding Medical has been helping clients discover and enjoy the benefits of an independent lifestyle since 1987. We take pride in helping our valued customers select the right assisted living products and home medical equipment for their health care needs. For Long Term Care Clients our broad line includes standard Long Term Care & Bariatric Beds, Resident Room Furniture that is both attractive and practical, Pressure Prevention products that meet a wide range of clinical demands, Multi-Position Recliners, Wheelchairs, Bathing Systems, Bath Safety, Respiratory and mobility aids just to name a few. We strive to be your sole source supplier for all your facilities resident care needs. There are currently five Harding Medical locations - Halifax, Dartmouth, Sydney, Moncton and Charlottetown. We offer mobility & home medical equipment sales, rental and service to clients living in Atlantic Canada. Our friendly staff of product experts will help you select products that fit your lifestyle and budget.



HOMWOOD HEALTH

The need for strong Employee and Family Assistance Programs (EFAP) is significant. According to a report from The Mental Health Commission of Canada - among Canadian workers ages 15 to 75, 28.4% reported high work-related stress. This rate has gone down slightly since 2005, but a substantial proportion of workers are highly stressed most of their working days. Issues like these can lead directly to incrementally higher incidences of workplace injuries, mental health issues, conflicts, substance abuse and other physical, social and emotional problems. Homewood's EFAP and crisis management programs offer multilingual and fully accessible (24/7) service and, as the name suggests, the EFAP program is available to employees' spouses/partners and dependents as well.



QUALITY SOUND ALARM

Quality Sound Alarm provides complete monitoring, security, PA, Patient Wandering, Caregiver Alert and communication systems for properties throughout Atlantic Canada. Backed by over 40 years of experience, they are available around the clock to provide you with the right solution to meet your needs. Contact their team at 506-452-0161 or gsa@nb.aibn.com.



MEDLINE CANADA, CORPORATION

Corporate Member



Together
Improving
Care™

Ensemble
au cœur
des soins™

Medline is a leading global manufacturer and provider of high-quality medical products and services to the healthcare industry. Our expertise in healthcare solutions throughout the continuum of care, coupled with the scale and agility of our supply chain, allow us to partner with our customers to enhance patient care, improve clinical outcomes, drive effective cost management and provide fast access to quality products. By applying our CARES values every day, in all that we do, Medline Canada is deeply committed to the health and wellbeing of our customers, employees, partners and communities. With more than 550 employees, including 125 dedicated sales and clinical professionals, and 8 distribution centres located across Canada, we are a trusted partner in delivering the healthcare needs of Canadians from coast-to-coast – Together Improving Care™. For more information, visit www.medline.ca.

MÖLNLYCKE



Mölnlycke is a world-leading medical solutions company. Our medical solutions advance performance at every point of care – from the hospital to the home, providing wound management, pressure ulcer prevention and surgical solutions. Customers use our solutions in almost 100 countries – and we own operations in more than 40 of them. Although we're a global company, our headquarters are still in Gothenburg – just a short distance from the town of Mölnlycke (pronounced 'Mon-licka'). The place where the company was founded in 1849 and the origin of the Mölnlycke name. We're the company behind Safetac® – the revolutionary soft silicone-based technology used in many of our wound care dressings such as Mepitel® and Mepilex® that results in less pain for patients. Learn more at www.molnlycke.ca

MPT-INTL



MPT-Intl was founded in 1991. Recognized by our Multi Position Adjustable Tables, our mission is to help those with reduced mobility feel at ease and comfortable. At MPT, there are several values which we hold in high regard, and we expect these values in every member of our team. These values are honesty, integrity, respect, and familial values. We believe that these values set our team members to provide to our client's high-quality services in a very professional and efficient manner. Our proud dealer for New-Brunswick is Lawtons Home HealthCare.

PANASONIC CANADA INC.

Corporate Member



For over 100 years, Panasonic has been a global technology leader dedicated to providing innovative solutions that improve lives and better our society. The Nurse Call System exclusively from Panasonic is a scalable, cost-effective, fully integrated communications and alarm management system that improves resident satisfaction, caregiver morale and the company's bottom line. This system, designed specifically for nursing homes, assisted living and other health facilities, is helping to reduce staff fatigue and improve caregiver response times, resulting in better outcomes and more satisfied residents.

PLAN A

Corporate Member



Canada's Only Long Term Care Staffing Strategy. At Plan A, our vision is to care for our fellow Canadians by bringing the most compassionate, forward-thinking and strategic staffing model to long term care homes across the nation.

SPG PURCHASING PARTNER NETWORK

Corporate Member



Better all together

SGP Purchasing Partner Network is a proudly Canadian owned transparent group purchasing organization offering contracts for the majority of our Customer Partner's operational requirements. As a leader in the growing Healthcare and Senior Living Sector we offer contracts for approximately 90% of your day to day requirements; PPE, food / non-food products, furniture, equipment, lifts, tubs, beds, clinical supplies, office supplies and capital items. SGP negotiates long-term contracts that insulate partners from rising prices, thereby offering a cost-effective way to secure quality, national brand-name products, and a range of innovative services. We deliver products and services that contribute to higher quality of life for residents and our home care clients.

STAFFSCHEDULECARE

Corporate Member



"Our goal is simple: Customers for Life." Our Workforce & HCM solution ensures compliance for your scheduling and time & attendance needs. StaffScheduleCare is North America's fastest growing fully integrated On-Demand Workforce Management solution for the health care sector. With more than 30+ years' experience in developing workforce management solutions, we strive to ensure that your facility is compliant in regard to current schedule creation and day-to-day maintenance. We also leverage technology to boost employee engagement by offering a fully integrated Employee Self Service platform.

Let us be your
partner in care.
Lean on The **A** Team as
your trusted staffing partner.

PLAN A™ | NEW BRUNSWICK
POWERED BY StaffStat

jointheAteam.com ☎ 506.269.5279 ✉ newbrunswick@jointheAteam.com

The advertisement features a circular image of several hands clasped together in a supportive gesture. Below the image, the text is set against a dark background with a blue and green curved border at the top. The main headline is in white and green, followed by a sub-headline in white. At the bottom, the company name 'PLAN A™ | NEW BRUNSWICK' is displayed in white, with 'POWERED BY StaffStat' in a smaller font below it. Contact information is provided at the very bottom in white.

STAPLES PROFESSIONAL

Office supplies are just the beginning. Staples Professional™ is the leading business supplier in Canada, providing customers with a complete assortment of products and services, including office supplies, technology products, facility solutions, furniture, and business services. As the business-to-business division of Staples, Staples Professional works with companies of 20 or more employees to develop customized programs and to provide dedicated account management to meet the needs of any business. Staples Professional is headquartered in Mississauga, Ontario with ten distribution centres across Canada. The company employs over 1,500 associates and leverages over 170 delivery vehicles. Staples Professional works in partnership with Staples Inc, in the US to provide common programs for our North American customer base. Staples Professional provides many advantages for all business sizes: a customizable online ordering system, excellent customer care, easy-to-browse catalogues, next day delivery capabilities and a dedicated sales organization to meet the needs of every type of business.



THRIVENB

ThriveNB works directly with your Human Resources and recruitment teams, your new employees, and their families. From the point of hire to the successful introduction of these families into their new lives in the region, our unique customized program is designed to anchor your new hires to and region and thrive in New Brunswick. Learn more at www.thrivenb.com.

